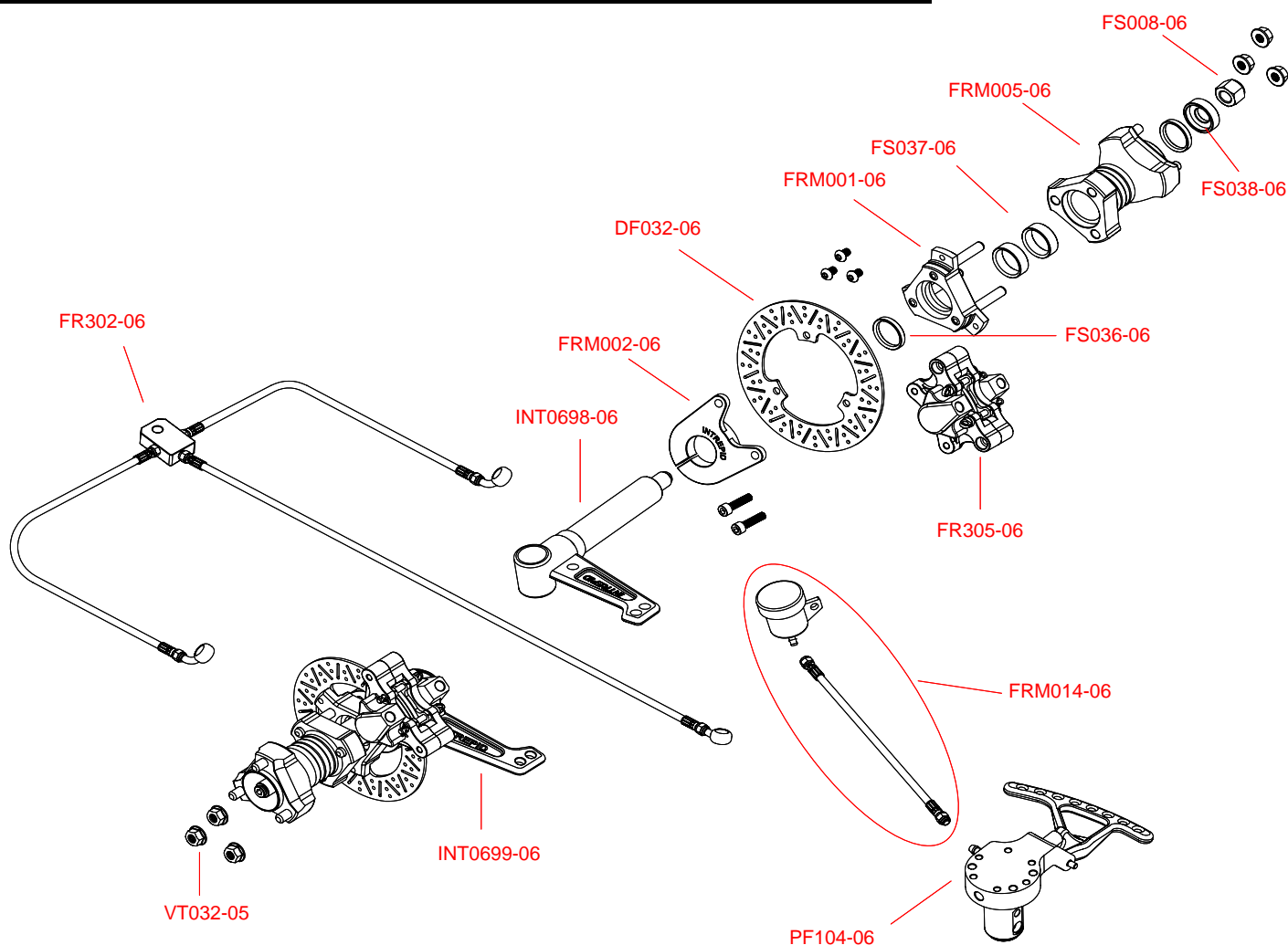


IMPIANTO FRENO ANTERIORE MANUALE / FRONT MANUAL BRAKING SYSTEM

INT0738-06	IMPIANTO FRENO ANTERIORE MANUALE (80/90/93/FR/11)
	FRONT MANUAL BRAKING SYSTEM (80/90/93/FR/11)



COD.	DESCRIZIONE / DESCRIPTION
INT0698-06	Fusello destro INTREPID 100cc. - Ø25mm - Forato - PH2 - per freno FRM Right spindle INTREPID 100cc. - Ø25mm - Holed - PH2 - for FRM brake
INT0699-06	Fusello sinistro INTREPID 100cc. - Ø25mm - Forato - PH2 - per freno FRM Left spindle INTREPID 100cc. - Ø25mm - Holed - PH2 - for FRM brake
PF104-06	Sistema pompa freno anteriore con leva a mano Front brake pump system with manual lever
FR302-06	Kit tubi freno per impianto anteriore FRM L.990-590-590 Kit of brake pipes for front braking system FRM
DF032-06	Disco freno anteriore FRM - sp. 2,5 dx/sx - Ac Front braking disk FRM - th. 2,5 right/left - Steel
FR305-06	Pinza freno anteriore per disco freno in acciaio - FRM Front braking caliper for steel brake disk - FRM
FRM001-06	Portadisco anteriore mod. FRM Front disk support mod. FRM
FRM002-06	Piastra supporto pinza anteriore FRM - Ergal Plate for front caliper support FRM - Ergal
FRM005-06	Mozzo anteriore - L. 95 - Mod. FRM - Alluminio Front hub L. 95- mod. FRM - L. 95- Aluminium
FRM014-06	Serbatoio recupero olio per pompa completo di tubo freno FRM Tank for oil recovery for FRM brake pump complete with pipe
FS036-06	Spessore H 5mm per fusello Ø 25mm- Acciaio Lining - H5mm for Ø25 Spindle - Steel
FS037-06	Spessore - H10mm per fusello Ø25 - Acciaio Lining - H10mm for Ø25 spindle - Steel
FS038-06	Rondella Ø25 per chiusura mozzo ant. Washer Ø25 for front hub closing
VT032-05	Dado fissaggio ruote M8 flangiato autobloccante - raccomandato CIK/FIA M8 flanged self-locking nut - Wheel hub clamping - CIK/FIA recommended